

Arkansas School for the Blind and Visually Impaired

***2022-2023 Ready for Learning &
Safety Plan for Students and Families***

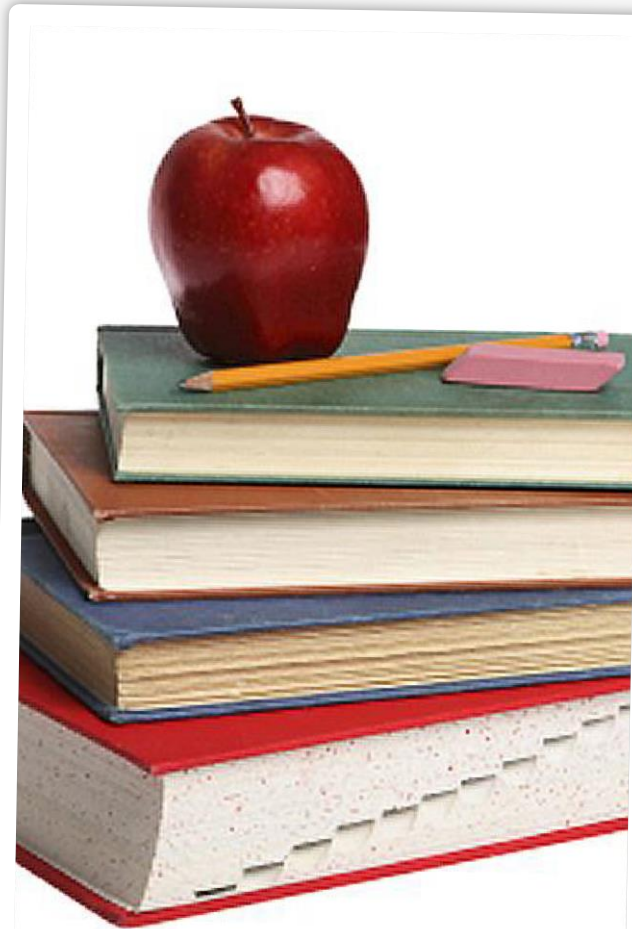
****Revised April 14, 2023***

Duration of RFL Plan

- Please note: this plan will be followed for the duration of the 2022-2023 school year which includes the summer of 2023.
- This plan will be revisited and revised for the 2023–2024 school year.
- Information and data will be gathered and assimilated into the RFL plan from our stakeholders which includes community partners and especially from parental input.

“Education is the passport to the future, for tomorrow belongs to those who prepare for it today”.

- Malcolm X





We Are All In This Together!

- we can't promise that COVID won't affect your family
- we can promise to do our very best to always put your child's physical, emotional and academic needs first!

School and Family Partnership is a MUST! We are a team!

- **Communication is key for safety in school!**
- **Send children to school who are healthy!**
- **Partner with our mental health providers to address all needs of our students!**
- **Follow all procedures regarding safe practices at all times!**
- **Commitment to excellence in education!**

Mask Wearing Protocol

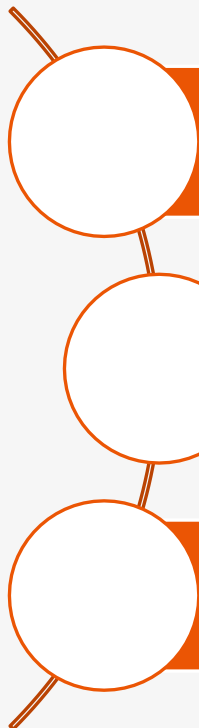
As of 04/14/2023

We will be using a three tiered system in place of the previous mask mandate:

- Green - wearing a mask will be at the discretion of the individual
- Yellow - it is strongly recommended to wear a mask
- Red - masks will be mandatory

We will use the CDC Community levels (Pulaski County) to determine our level for the week. The CDC updates its website weekly on Thursday. If an issue occurs on campus, we may change the level to protect the students and staff.

Goals for 2022-2023

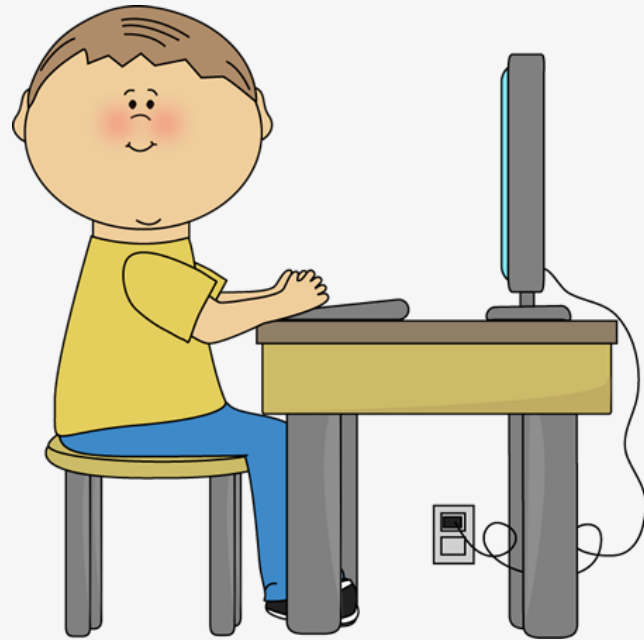
- 
- Follow all CDC, DESE, and ADH COVID-19 mitigation strategies
 - Provide rich and meaningful educational experiences
 - Continue to provide data driven enrichment and supplemental instruction in an attempt to make up for lost learning

How we will learn:

- Traditional “face to face” teaching on site
- Traditional approach to providing education
- Use of technology to support learning
- Plan to use DESE approved AMI days in the need of emergency (for the rest of this school year)
- Student O&M will focus on orientation and spatial awareness for appropriate social distancing

A successful learner is...

- ...self-motivated
- ...an independent learner
- ...very committed to learning
- ...computer literate
- ...strong time management skills
- ...effective communicator



Meals

- All individuals must wear face masks, use hand sanitizer and wear gloves for accessing the salad bar
- Breakfast will be served in the cafeteria.
- Lunch will be served in the cafeteria.
- Dinner will be served in the cafeteria.

Safety Precautions

- ❖ Independent travel – use your canes. No sighted guide if at all possible
- ❖ **Continual handwashing** throughout the day
- ❖ Environmental Services has a commercial sanitization crew entering the buildings after educational staff and students finish the day
- ❖ Environmental Services will also be cleaning and sanitizing throughout the day
- ❖ Teachers and paraprofessionals will also be cleaning their immediate areas throughout the day
- ❖ Elementary students will stay in their assigned respective areas for the majority of the day
- ❖ **All day students MUST be picked up prior to 4:00 PM,** day students are not allowed in the dormitories for social distancing and sanitization purposes

Safety Precautions

- ❖ Teaching outside will be encouraged if possible
- ❖ During meals for elementary the teachers will access food from the salad bar
- ❖ Teachers and secondary students will use hand sanitizer and gloves to access food from the salad bar
- ❖ Bottled water will continue to be provided for students and staff in addition to our water refilling station
- ❖ Restrooms will be monitored and cleaned

Safety Precautions

- ❖ Scheduled visitors are allowed in the buildings or dormitories
- ❖ Personal Protective Equipment will be provided for staff and students
- ❖ Staff will be in constant contact for advisement with our nurses
- ❖ First aid kits will be provided to staff
- ❖ Social distancing will also be enforced as much as possible – even outdoors

Safety Precautions

- ❖ Arrival time for students is critical – students must report to their assigned location prior to 7:50
- ❖ Any student who is tardy must report to the attendance office in the main office
- ❖ Any student who must leave for **any** reason must be checked out through the main office.
- ❖ A Parent or their representative must call the main office to enter the building. Parents must wait for their student at the attendance office window.
- ❖ The student will then be checked out prior to leaving.

Masks and Quarantine Protocols

- ❖ We have returned to normal activities for the 2022-2023 school year. Masks are not longer mandated at the school. However, the school board approved requiring masks when the CDC community levels for Pulaski County are in the Red Zone.
- ❖ Masks are still required when visiting the school's Infirmary/Health Center, the Low Vision Clinic and in the serving line in the cafeteria.
- ❖ Staff and students are sent home for a period of 5 days after testing positive for COVID-19. When returning to work or school they are required to wear masks around others for an additional 5 days to complete a 10 day quarantine period. Staff and students may need to remain home longer than 5 days if symptoms have not improved.
- ❖ The school no longer identifies or quarantines "close contacts". We do encourage staying current with COVID-19 vaccinations. The school's Infirmary/Health Center regularly holds vaccination clinics throughout the school year and offers COVID rapid antigen point of contact testing for symptomatic or close contact for staff members and for students with parental permission.

Hand Washing Saves Lives!

- ❖ Everyone will wash hands thoroughly and frequently!
- ❖ It should take at least 20 seconds to wash hands appropriately!
- ❖ Hand sanitizing stations are set up throughout the buildings with alcohol based products!

We can all help to keep each other safe and healthy!



Leo says, “Masks are
COOL”!

We will be protecting each other
and protecting ourselves!



ASBVI COVID 19 Response Action Plan

Limited Response

- Classroom or Grade-Level (Modification is Necessary)
- Superintendent supports P.O.C. (Nurse Vicki) and school staff to communicate with parents of affected students
- Superintendent reports limited response modification in *Insights* reporting system
- Superintendent does not have to consult with DESE/ADH; however, the superintendent may wish to talk to the assigned DESE P.O.C.

Moderate Response

- School-Level (Modification is Necessary)
- Superintendent supports P.O.C. (Nurse Vicki) and school staff to communicate with parents of affected students.
- Superintendent determines if AMI plans will be implemented for the school. Superintendent reports moderate response modification in *Insights* reporting system.
- Superintendent must consult with DESE/ADH for closures that extend beyond the time needed for contact tracing, securing substitutes, and/or cleaning and disinfecting facilities.

Critical Response

- District-wide (Modification is Necessary)
- Superintendent supports P.O.C. (Nurse Vicki) and school staff to communicate with parents of affected students.
- Superintendent determines if AMI plans/closure will be implemented for the district. Superintendent reports critical response modification in *Insights* reporting system.
- Superintendent *must* consult with DESE/ADH for closures that extend beyond the time needed for contact tracing, securing substitutes, and/or cleaning and disinfecting facilities.